

Serina Diniega receives University of Arizona Student Chapter Certificate of Recognition from faculty advisor Alain Goriely.



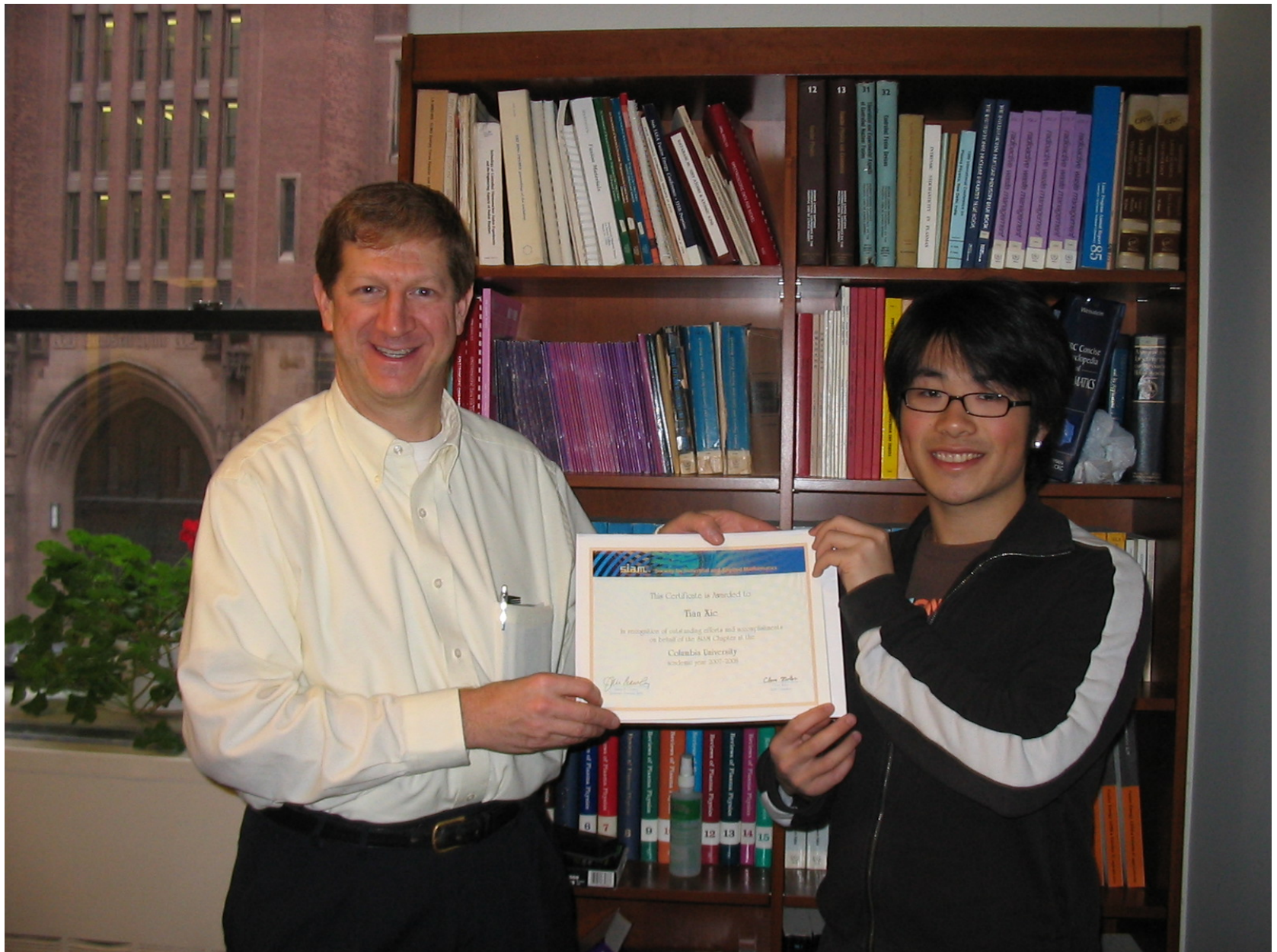
Faculty advisor Konstantina Trivisa awards University of Maryland Student Chapter Certificate of Recognition to Aaron Lott



Faculty advisor Tom Manteuffel awards University of Colorado at Boulder Student Chapter Certificate of Recognition to Christian Ketelson.



Pearl Flath received University of Texas at Austin Student Chapter Certificate of Recognition for activities in 2007.



Faculty advisor David Keyes awards Columbia University Student Chapter Certificate of Recognition to Tian Xie.



Old Dominion University SIAM Chapter Conference April 2008



Members of Worcester Polytechnic Institute Chapter of SIAM attend the SIAM Conference on Mathematics for Industry in Philadelphia, Oct 2007.



Students from Rice, Texas Tech and University of Texas at Austin SIAM chapters organized the 2nd annual Texas Student SIAM Conference at Rice University, April 2008



Worcester Polytechnic Chapter hosts field trip to Woods Hole Oceanographic Institution April 30, 2008



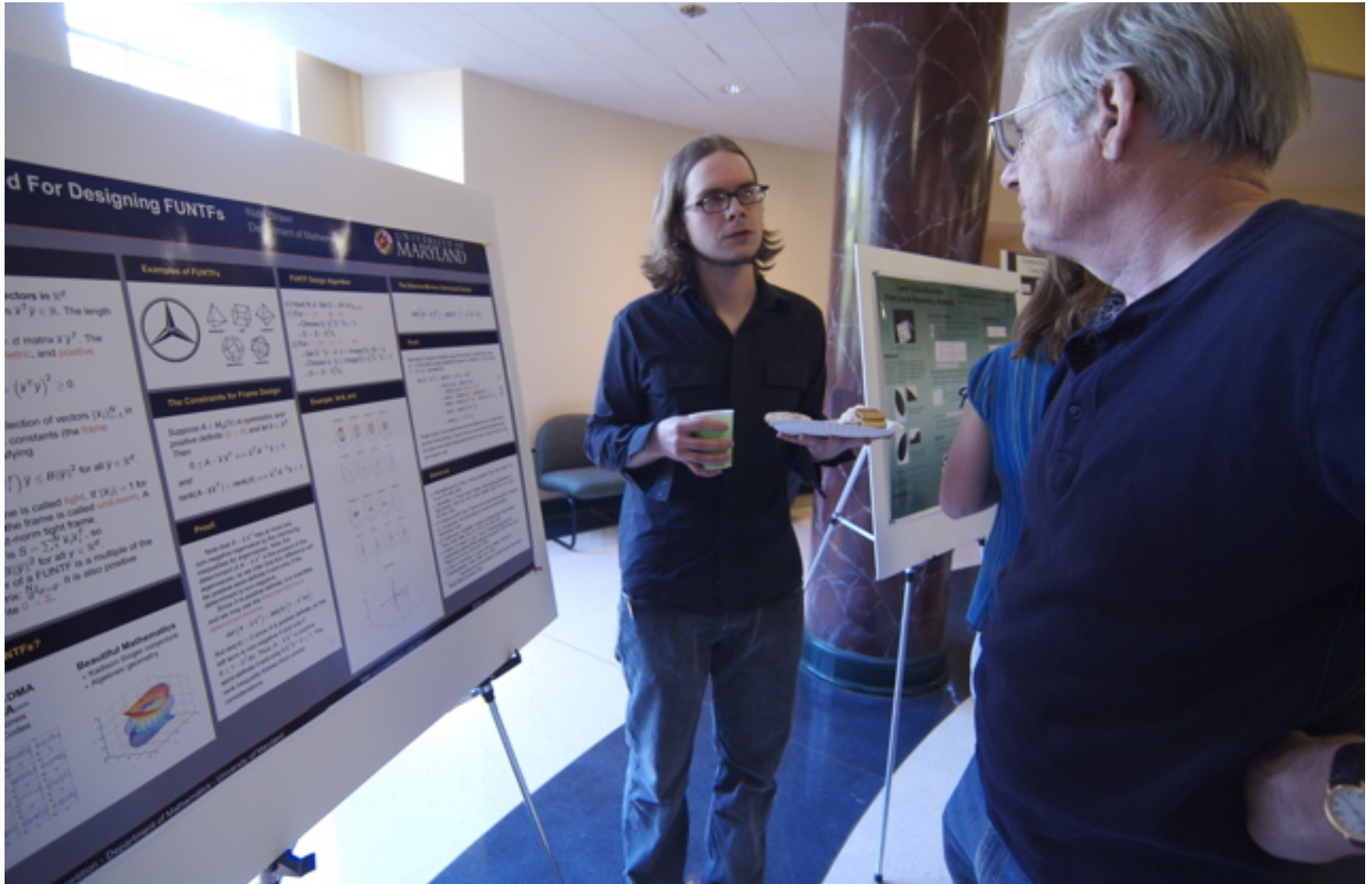
University of Maryland Chapter hosts 2nd Annual Graduation Conference



University of Maryland Chapter at 2nd Annual Graduation Conference



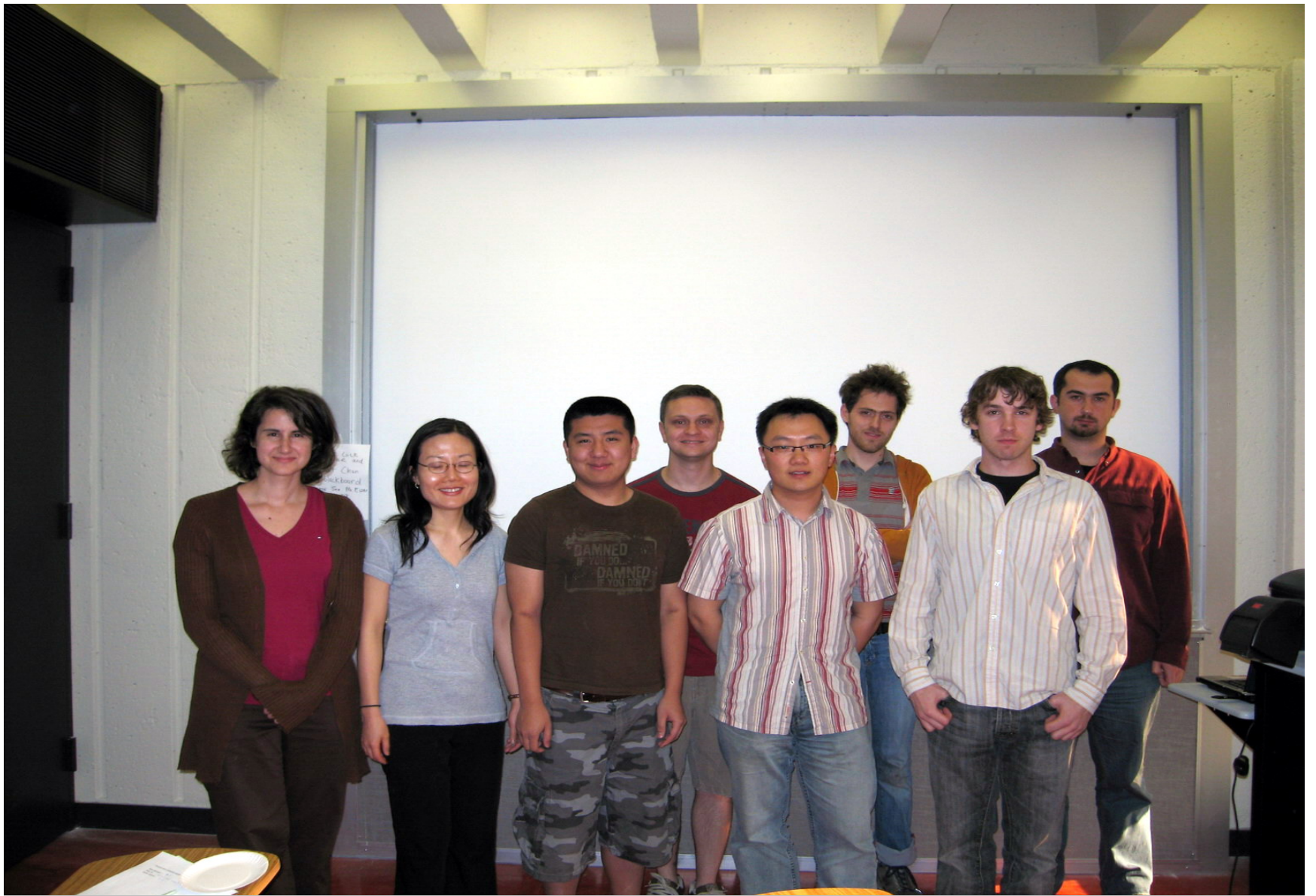
University of Maryland SIAM Chapter Presentation



University of Maryland SIAM Chapter Presentation



University of Illinois at Chicago Chapter of SIAM Seminar



University of Illinois at Chicago Chapter of SIAM



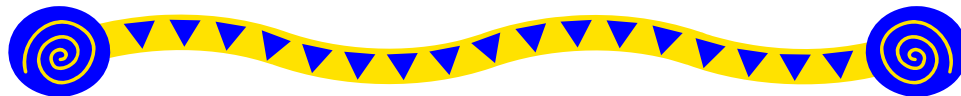
University of Delaware Chapter of SIAM at Great Adventure



TAMMS – Texas Applied Mathematics Meeting for Students



Tufts University Chapter of SIAM hosts luncheon with invited guest Margaret Wright from NYU (center).



$$\int \frac{x-3}{e^{2x}} dx$$

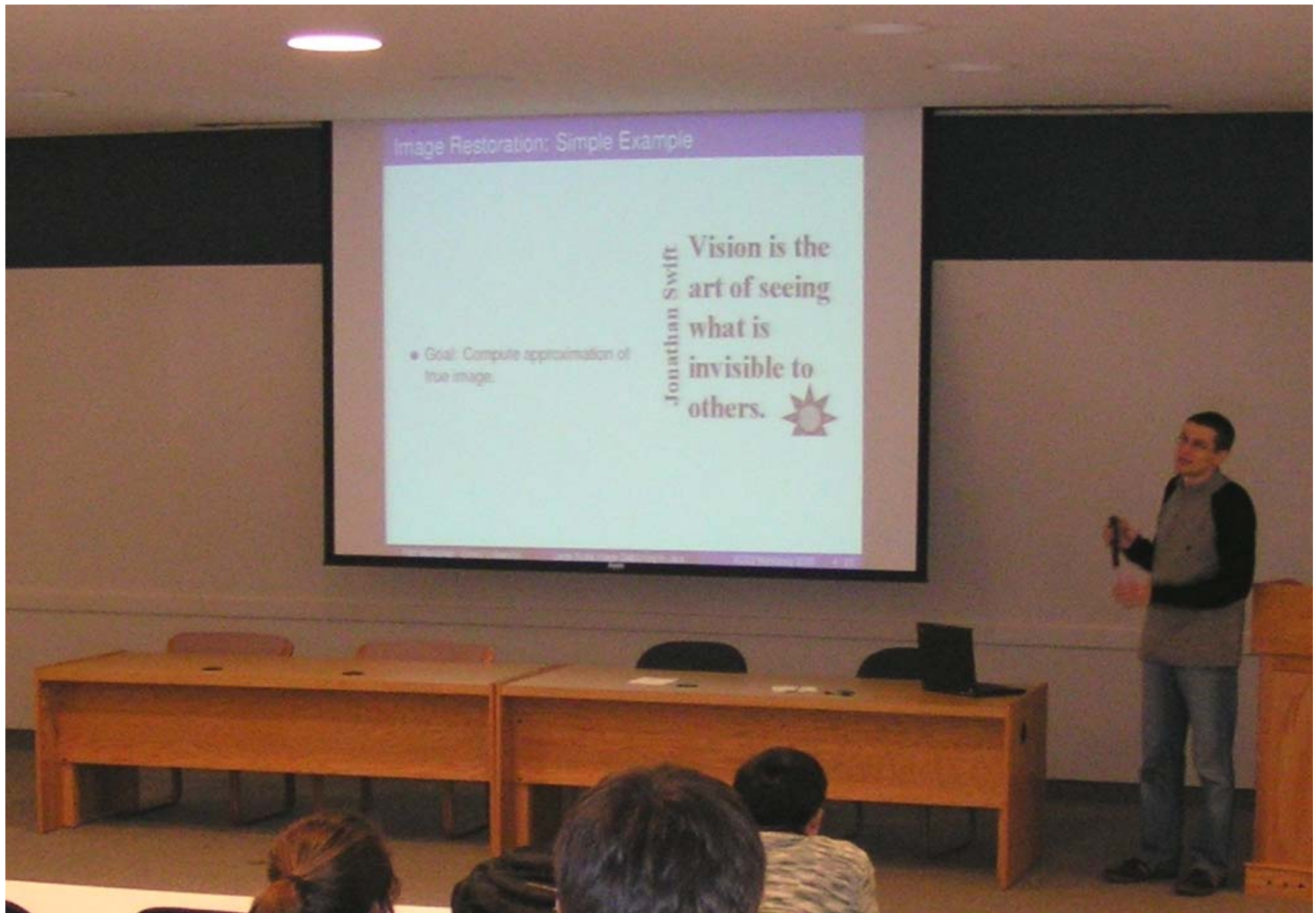
$$\begin{aligned} & \int (x-3)e^{-2x} dx \\ &= \int xe^{-2x} - 3e^{-2x} dx \\ &= \int xe^{-2x} - 3 \int e^{-2x} dx \end{aligned}$$

$u = x$
 $dv =$
 $du =$
 $v =$

SUNY New Paltz Chapter Integration Bee



Old Dominion University Chapter conference April 2008



2nd annual ACES Workshop (collaboration of chapters at Auburn, Clemson, Emory, & University of S. Carolina), March 2008



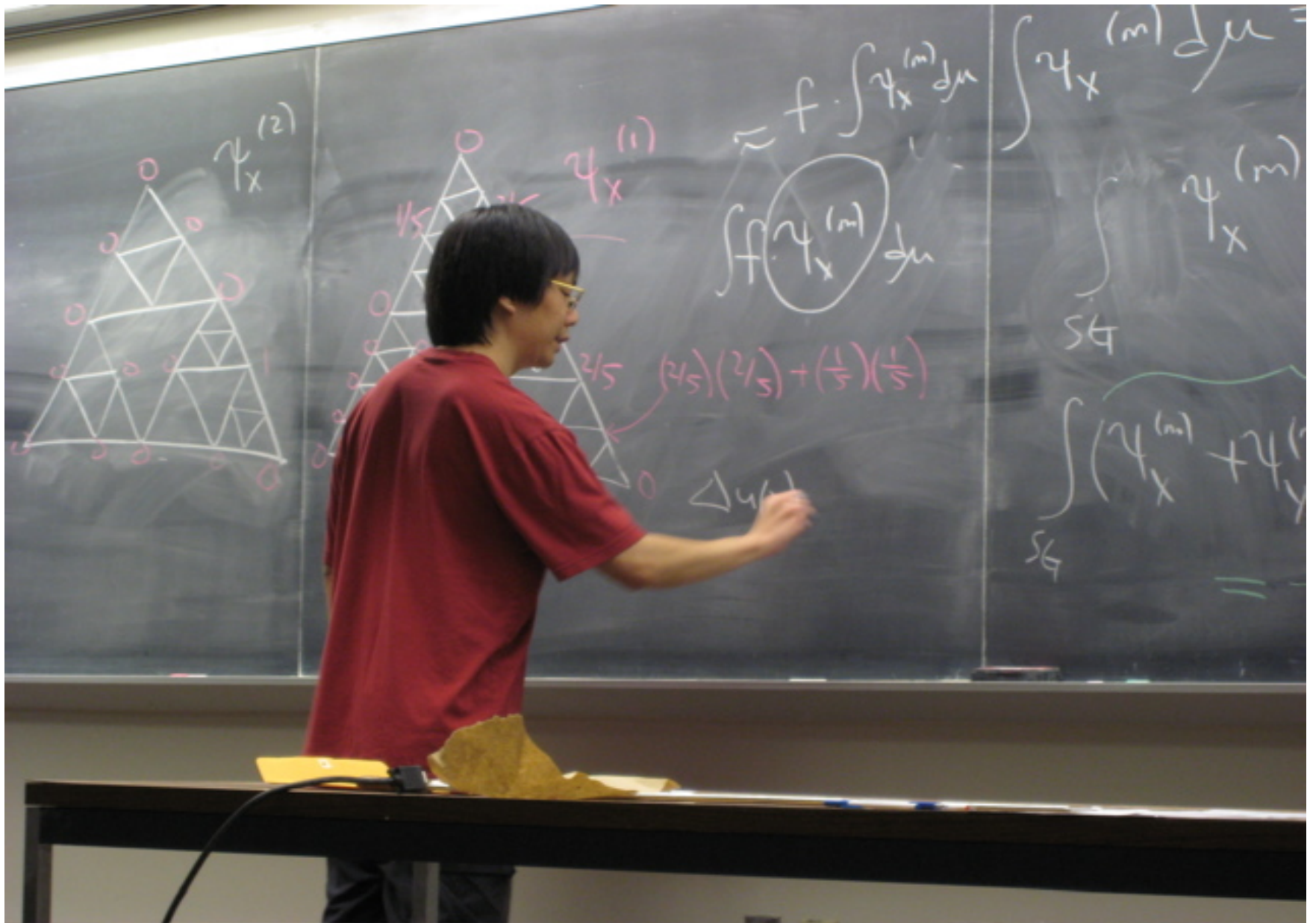
University of Colorado at Boulder Chapter



Old Dominion University Chapter conference participants



SIAM Chapter Students at University of Maryland



University of Maryland Conference Workshop

The Galerkin Method

Error estimates by using Hermit splines of degree $2m-1$:

1. S-mesh (almost optimal)

$$\|u - u_h\|_\epsilon \leq c(N^{-1} \ln N)^m$$

$$\|Q_h u - u_h\|_\epsilon \leq c(N^{-1} \ln N)^{m+1}$$

2. A-mesh (optimal)

$$\|u - u_h\|_\epsilon \leq cN^{-m}$$

$$\|Q_h u - u_h\|_\epsilon \leq cN^{-m-1}$$



2008 Front Range Conference



2008 Front Range Conference (collaboration of chapters at University of Colorado at Boulder, Colorado Springs, and Denver)



2008 Front Range Conference

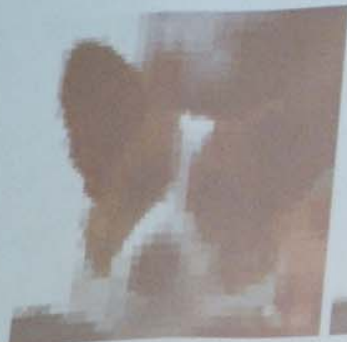


2008 Front Range Conference

- Image EBMR
- Wavelet Comparison

Wavelet Compressions

EBMR Comparison with Standard Wavelet Techniques [2].



Exemplar-Based Multiresolution
Error = 0.222547



Haar (wavelet)
Error = 0.191649



Daubechies D4 (wavelet)
Error = 0.187932





2008 SIAM Annual Meeting Student Chapter Breakfast



2008 SIAM Annual Meeting Student Chapter Breakfast



2008 SIAM Annual Meeting Student Chapter Breakfast



2008 SIAM Annual Meeting Student Chapter Breakfast